



400,000 SF CLASS A OFFICE CAMPUS  
in the Heart of **Foster City**

**NEWMARK**

**JOSH ROWELL**

Executive Vice President  
650.358.5261  
josh.rowell@nrmk.com  
CA RE License #01236434

**MARK COURSON**

Managing Director  
650.358.5800  
mark.courson@nrmk.com  
CA RE License #01704280





**Parkside Towers** is a Class A, 400,000 SF campus with modern on-site amenities and flexible workspaces. Strategically located in Foster City with convenient access, prominent signage visibility and stunning views, the campus offers the ideal environment for businesses to thrive, balancing workstyle and lifestyle.



## AVAILABILITY SUMMARY

1001 E Hillsdale Blvd	8th Floor	±29,670 SF	Contiguous for ±64,332 SF
	7th Floor	±29,468 SF	
	6th Floor	±34,864 SF	
	Suite 500	±24,539 SF	Plug & Play
	Suite 550	±9,749 SF	Plug & Play
1051 E Hillsdale Blvd	Suite 710	±20,308 SF	





# ELEVATE YOUR WORKDAY



**New Outdoor Lounge and Communal Workspace**



**New state-of-the-art Fitness Facility with Showers and Lockers**



**On-site Training Conference Center**



**EV Charging Stations**



**Bicycle Storage**



**Private Shuttle with Direct Service to Caltrain**



**Secured Parking Garage**



**Dedicated Food Trucks**

# PROMINENT LOCATION AND VISIBILITY



Signage and Branding opportunities, visible from Highway 92 and 101



Visibility of Parkside's two 8-story Office Towers from HWY 92



Located Directly Across the Street from the Foster City Civic Center



Unobstructed Views of San Francisco Bay, the San Mateo Hills and Foster City's Central Lake



Excellent access to HWY 101 and the San Mateo Bridge

SAN MATEO BRIDGE



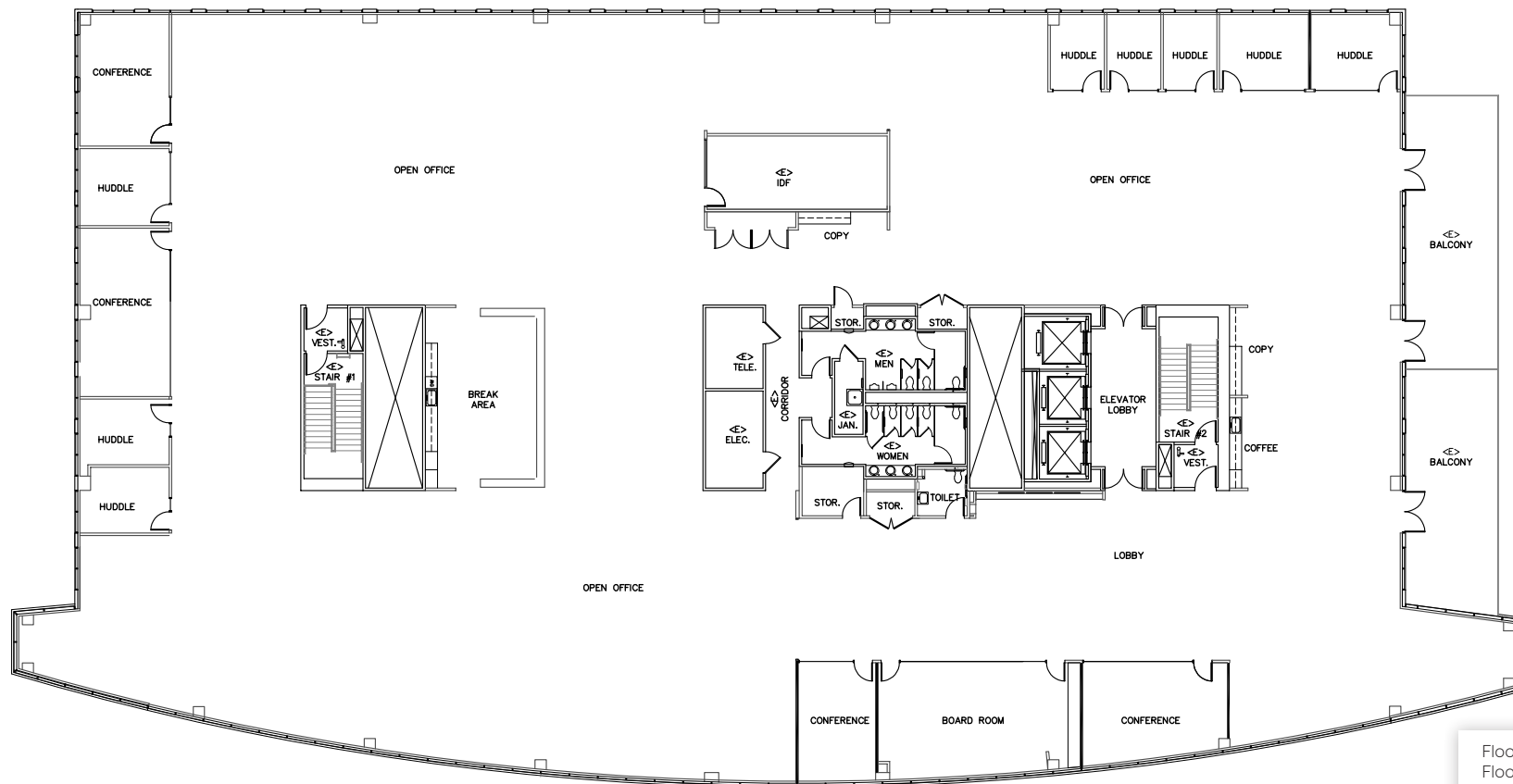
LAKE VIEW





# 1001 E. HILLSDALE BOULEVARD EIGHTH FLOOR | ±29,670 SF

- Available Now
- CREATIVE MODERN TECH SPACE
- Full Floor with Windowline Private Offices and Conference Rooms
- Exposed Ceiling Grid
- Dedicated Balconies

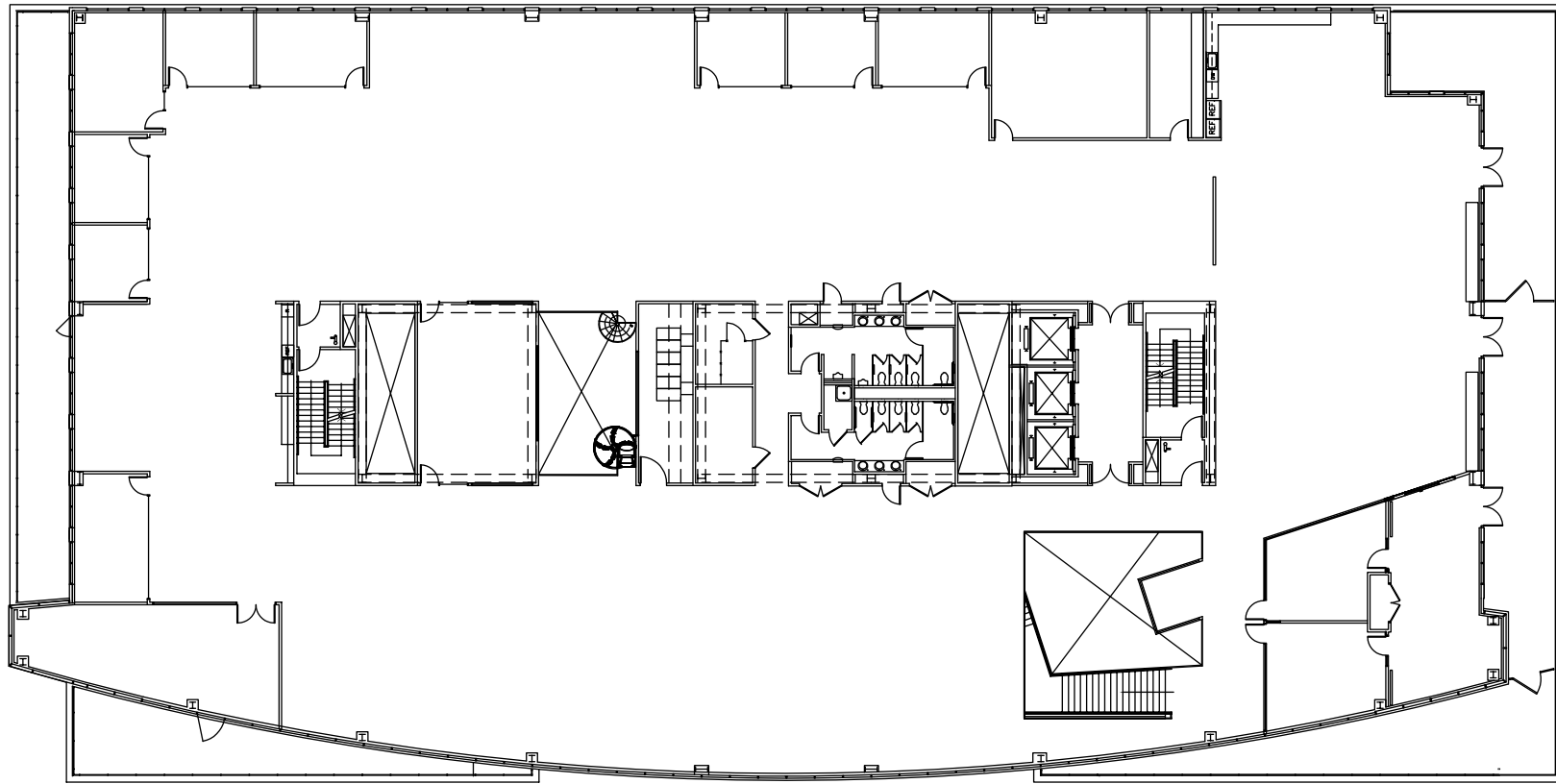


Floor-to-Floor Height  
Floor 4: 14'6"  
Floors 5-8: 13'6"  
  
Ceiling Height  
Finished (Typical): 9'6"

# 1001 E. HILLSDALE BOULEVARD SEVENTH FLOOR | ±29,468 SF\*

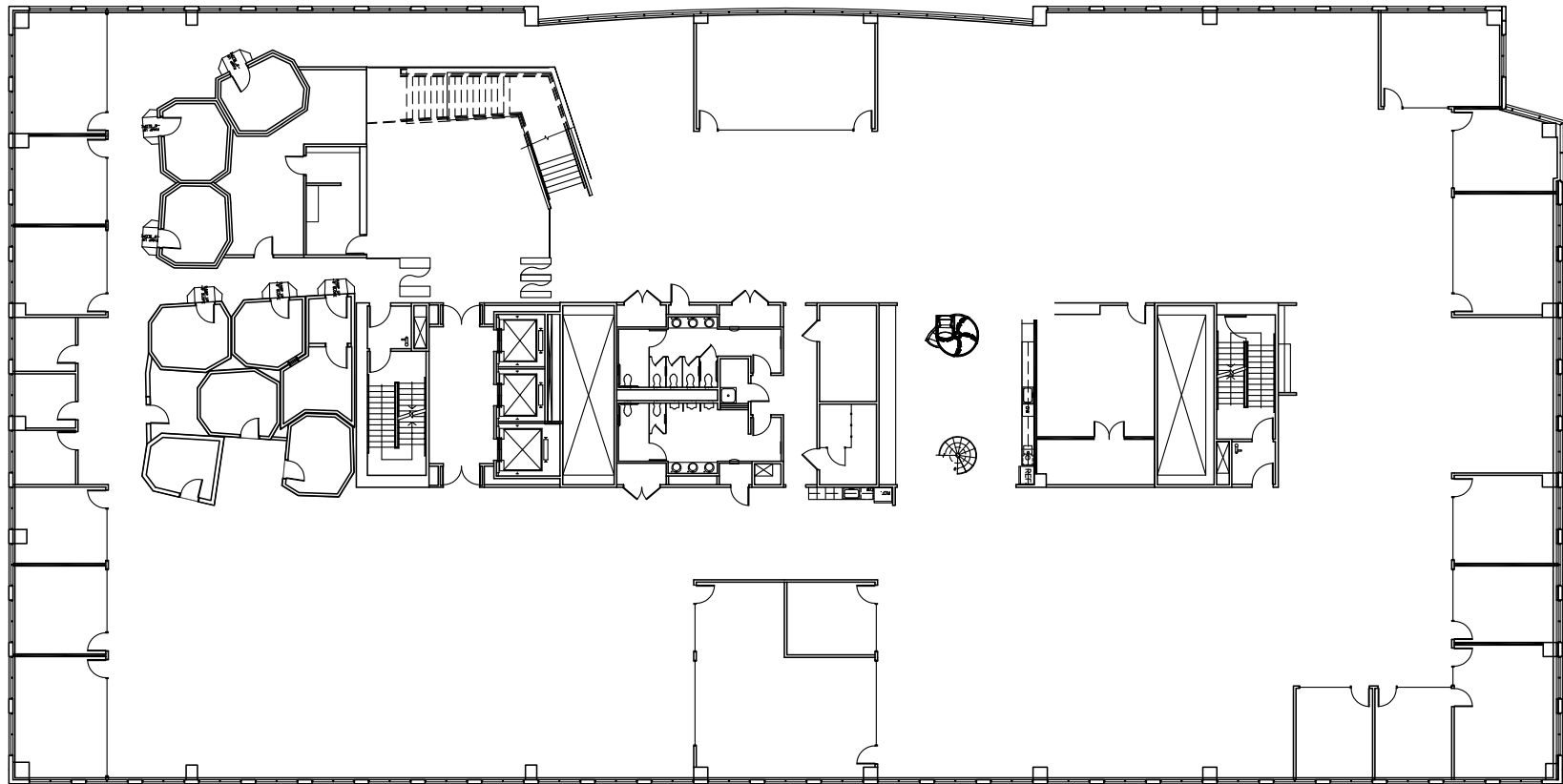
\*Can be contiguous with 6th floor for ±64,332 SF

- Available Now
- Internal Stairwell
- Exposed Ceiling Grid
- Floating Conference Room
- Large Kitchen
- Private Balconies



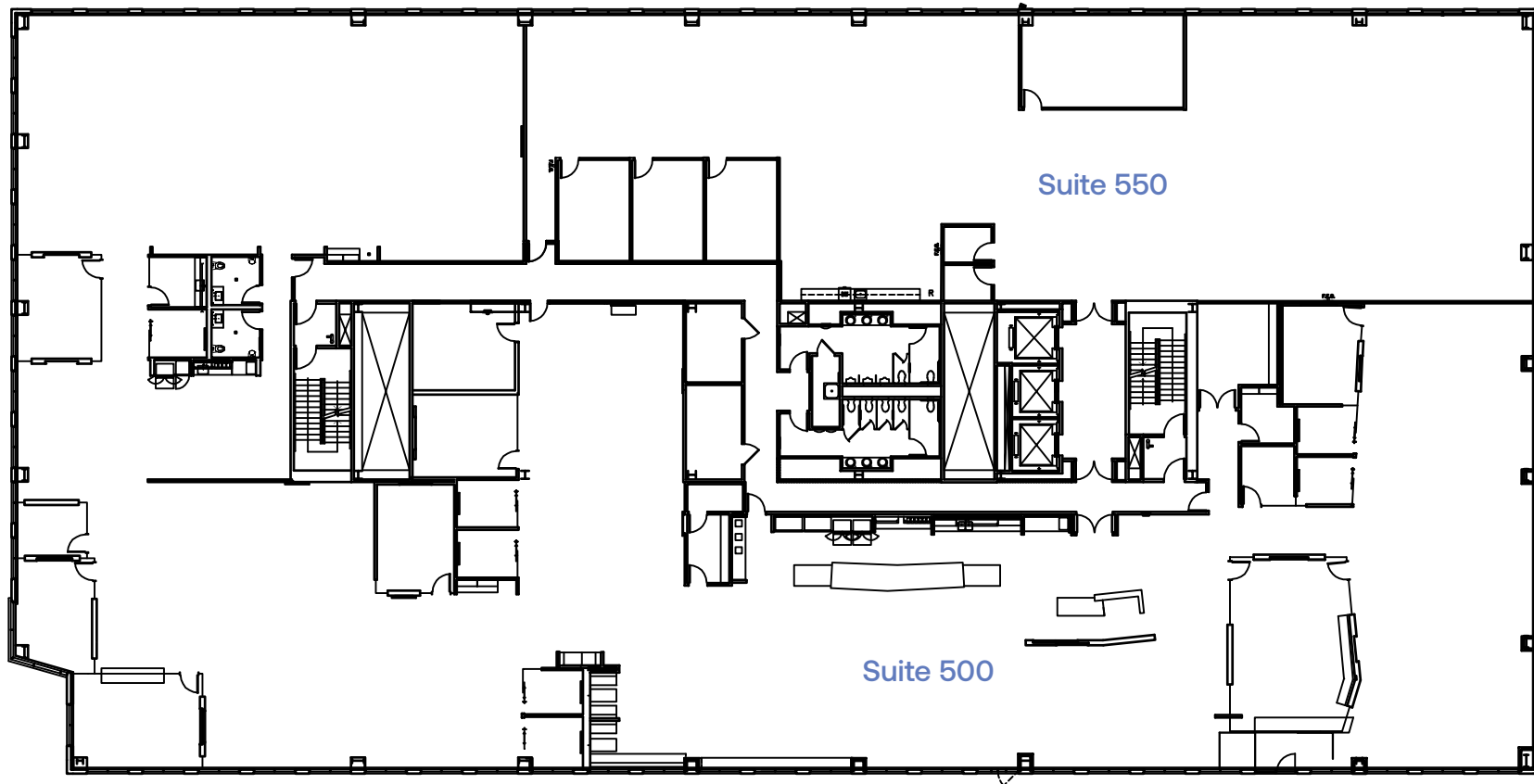
# 1001 E. HILLSDALE BOULEVARD SIXTH FLOOR | ±34,864 SF\*

\*Can be contiguous with 7th floor for ±64,332 SF



- Available Now
- Internal Stairwell
- Exposed Ceiling Grid
- Soundproof Rooms

1001 E. HILLSDALE BOULEVARD  
FIFTH FLOOR | ±34,288 SF\*



- Suite 500 | 24,539 SF\* & Suite 550 9,749 SF\*
- Both Suites can be Contiguous for 34,288 SF\*
- Available Now
- **PLUG & PLAY**
- Double Door Entry Off Elevator Lobby

- High-End Kitchen
- Exposed Ceiling
- 500W: 110 Work Stations; 550W: 78 Work Stations
- 3,000 SF Exclusive Rooftop Deck



**SUITE 500**  
360° Virtual Tour



**SUITE 550**  
360° Virtual Tour

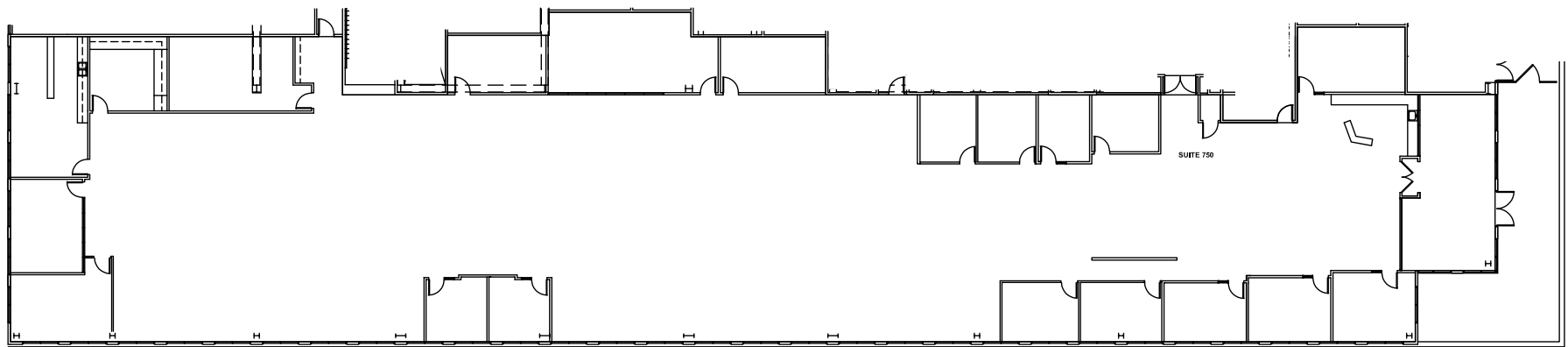


# 1001 E. HILLSDALE BOULEVARD FIFTH FLOOR ROOF DECK PLAN | ±3,835 SF







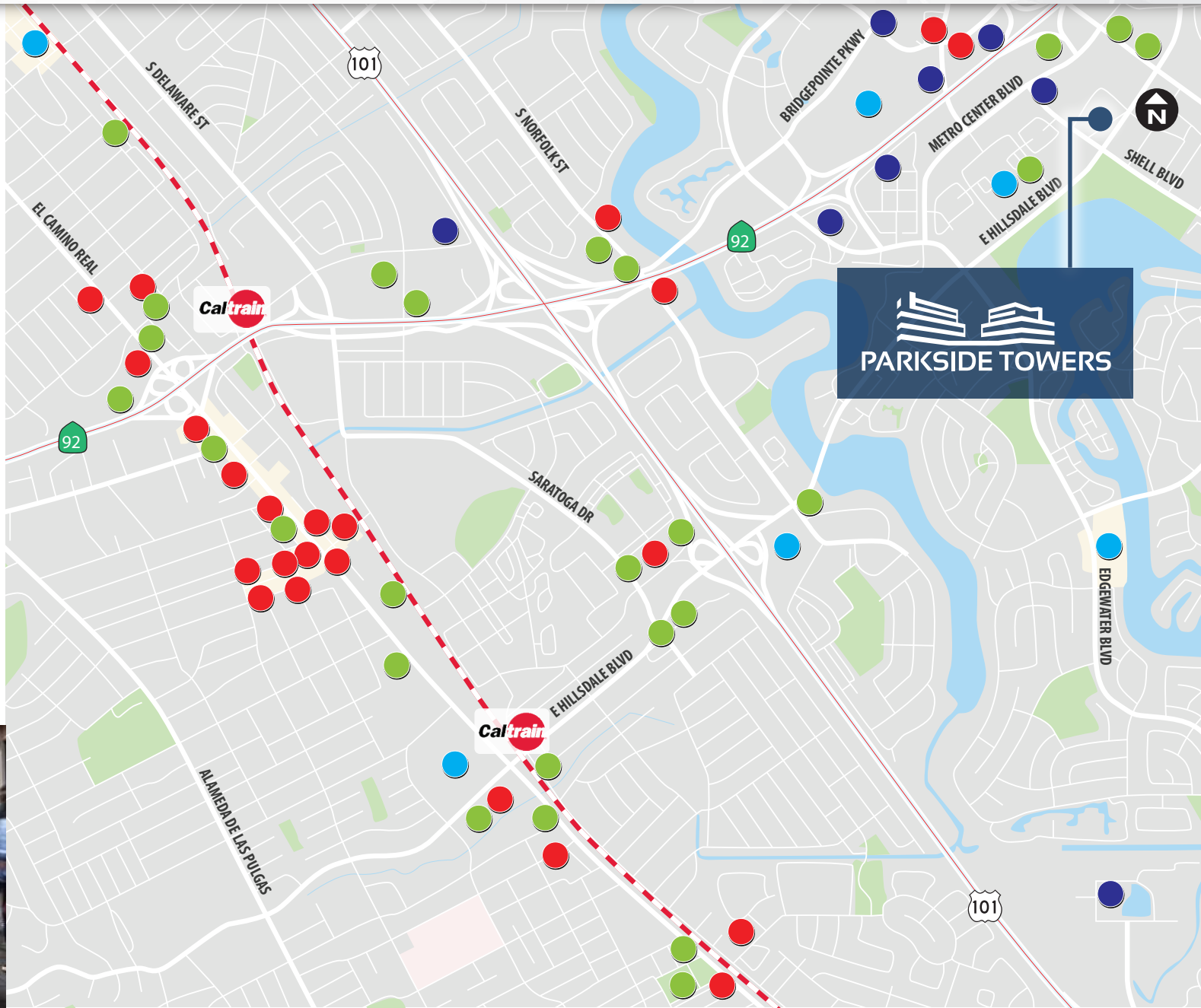
# 1051 E. HILLSDALE BOULEVARD SEVENTH FLOOR | ±20,308 SF

- Suite 710
- Available Now
- **OPEN FLOOR PLAN**



# NEARBY AMENITIES

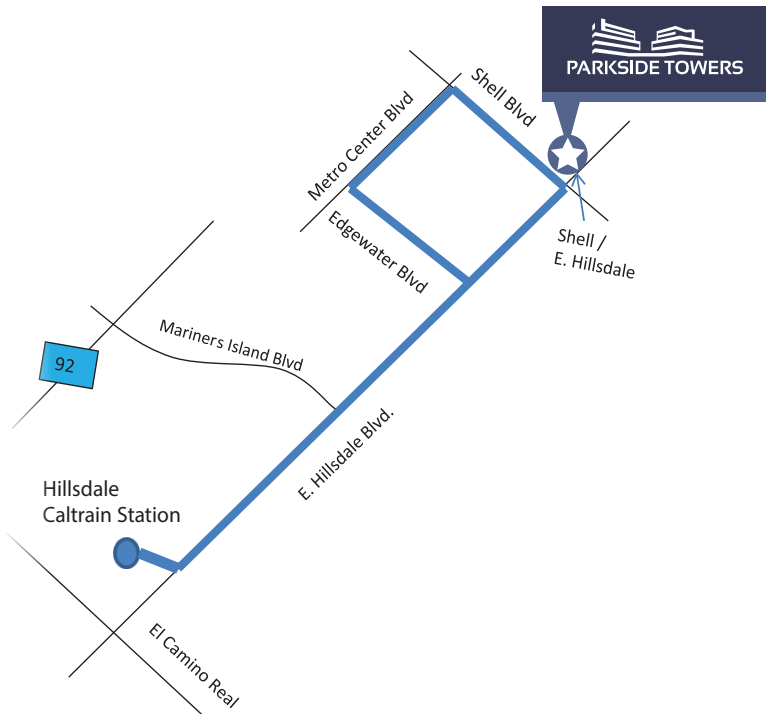
- 40+ Restaurants 
- 30+ Services 
- 6 Shopping Center 
- 8 Hotels 





# CONVENIENT ACCESS

## DEDICATED ALL DAY SHUTTLE



## DRIVE TIME TO MAJOR PLACES

Destination	Distance (Miles)	Drive Time (Mins)
DOWNTOWN SAN MATEO	4.3	9
SAN FRANCISCO	22	24
SFO	8.9	10
PALO ALTO	14	16
OAKLAND	27	28
SJC	26	28





# RECENT UPGRADES







## PARKSIDE TOWERS

1001-1051 E. HILLSDALE BOULEVARD, FOSTER CITY

### JOSH ROWELL

Executive Vice President  
650.358.5261  
josh.rowell@nmrk.com  
CA RE License #01236434

### MARK COURSON

Managing Director  
650.358.5800  
mark.courson@nmrk.com  
CA RE License #01704280

[parksidetowersfostercity.com](http://parksidetowersfostercity.com)

2950 SOUTH DELAWARE STREET, SUITE 125, SAN MATEO, CA 94403

The distributor of this communication is performing acts for which a real estate license is required. The information contained herein has been obtained from sources deemed reliable but has not been verified and no guarantee, warranty or representation, either express or implied, is made with respect to such information. Terms of sale or lease and availability are subject to change or withdrawal without notice. MP-797 • 1/25

**NEWMARK**



**HARVEST**  
PROPERTIES